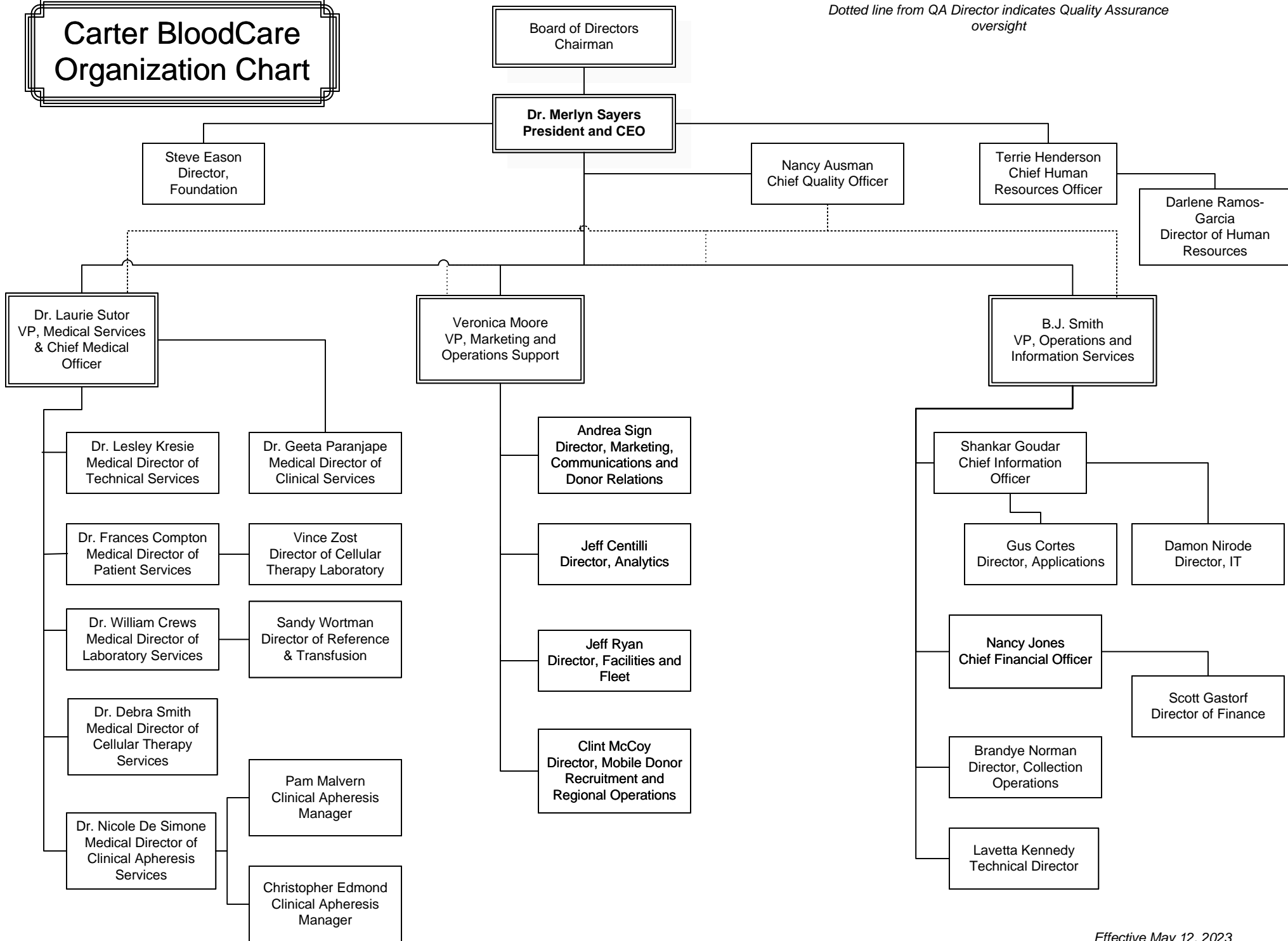


Carter BloodCare Organization Chart

Dotted line from QA Director indicates Quality Assurance oversight



Legend
 Solid Lines: Direct Reporting
 Dashed Lines: Secondary Reporting

Dr. Merlyn Sayers
 President and CEO

Nancy Ausman
 Chief Quality Officer

Veronica Moore
 VP, Marketing and
 Operations Support

**Quality has oversight for ALL CBC
 regulatory departments**

Polly Wynn
 Manager, Tyler
 Quality Assurance

**Carter BloodCare
 Corporate Operations
 Bedford**
 Refer to separate organizational chart

Clint McCoy
 Director of Mobile Donor
 Recruitment and Regional
 Operations

Melonye Rodgers - Manager
 • Mobile Collections
 • Training/NEO

Roger Xu
 Technical Operations
 Manager

Jeff Reed
 IT Support II Specialist

Bridgitte O'Daniel
 Operations Coordinator
 • Donor Center Collections

Terrie Henderson
 Chief Human Resources
 Officer

Brandi Kile
 Human Resources
 Generalist

Marla Boren, Manager
 • Distribution – East and
 Central Texas
 • Component Processing
 • Radiation Safety Officer

Rick Thornburg
 Hematology Manager

Jacquelyn Decker
 Manager of Mobile Donor
 Recruitment

Denise Fyffe
 Hematology Assistant
 Manager

Michael Moseley
 Facilities and Fleet
 Supervisor